

PORT BAY EXPRESS

Official Newsletter of the Portarlington Bayside Miniature Railway Inc.

Volume No.9 – Issue No.2.

February, 2024.



It's Sunday 14th January, 2024 and the PBMR is in the middle of the January School Holiday running season. Rochelle Holstein can be seen driving Harvey with a fully loaded train departing from the Point Richards Station. Clive Harper, our Stationmaster, can be seen overseeing station operations in the background.

(Picture: Lyndon Coon)

OUR PRESIDENT REPORTS :

- It is still obvious that we need more volunteers. All members are strongly encouraged to try and recruit a new member into our ranks to ease the burden on all of us.....
Please consider !!.
- **The month of January** turned out to be fairly reasonable for the mini railway, with our operating every Sunday running plus Summer School Holiday Running resulted in a slight loss of 101 passengers carried being noted and duly recorded.....
- I wish to thank all of our members and volunteers for their sterling help and assistance over the last twelve months. Without your help we just would not have our miniature railway. Keep up the great work all.
- May I also take this opportunity to thank our members who went out of their way to assist the railway during our January School Holiday running. The extra days we run places a strain on all of us and your efforts in helping out are very much appreciated.

Keith Stasinowsky – President.



FROM THE SECRETARY'S DESK:

- There are vacancies for Party Bookings. The miniature railway makes for that ideal facility for your family. Contact our Party Bookings Person, Harm on 0476-124-598.
- It is a legal requirement for all members to notify the Department of Government Services (formerly Department of Justice and Community Safety) of their personal involvement with this miniature railway. This can be done “On line” via their website: workingwithchildren.vic.gov.au
- **It is really important** when you arrive and depart from the miniature railway to sign on and off in the Attendance Book in the Station Office. If you fail to do this you are not covered by our Insurance scheme. **Kindly ensure that you do this, please....**
- **Whenever a reportable incident occurs** it the responsibility of the member(s) concerned to **submit an Incident Report** to the Trackmaster on duty. These reports are to be passed onto the Secretary ASAP, for further processing as the case maybe.

Brian Coleman – Secretary.

G33, THE FYANSFORD CEMENT WORKS & THE BELLARINE RAILWAY. (By Oliver Wilkes)

The Fyansford Cement Works was a limestone quarry that opened in 1890. Originally, all raw material was transported 4km by horse-drawn wagons. However, this system encountered issues and so a tramway was laid from the quarry to the closest road reserve, about 3km away. This operated until 1911, until an aerial ropeway was constructed directly from the quarry to the works. This operated until 1924, until it was abandoned and the 3ft 6in gauge railway took over. It crossed the Moorabool River with a trestle bridge twice, operating with four Hudswell Clarke 0-4-2STs that were acquired second-hand from the Wallaroo & Moonta Mining & Smelting Company. Another two locomotives were purchased in 1926, which were Vulcan Iron Works 0-6-0STs that came second-hand from the Henderson Naval base in WA.

In 1931 the original quarry was abandoned and replaced with a new one to the south, with a depth of 120 feet below ground level. A new line was built down into this quarry through a long curving tunnel with a grade of 1 in 37. In 1936 a large 2-6-0 + 0-6-2 Garratt similar to the WAGR M/Ms class was purchased to help with an increase in traffic, with a 2nd identical one purchased in 1939. They were numbered No.1 and No.2 respectively. Another garratt locomotive was purchased in 1946, an unused Australian Standard Garratt (ASG) which was numbered as G33 (Or simply '3' as another article leads me to believe). 2 Perry Engineering 0-4-0Ts were purchased in the same year from the State Electricity Commission, numbered 10 and 11. Finally, the sole diesel locomotive of the railway was purchased in 1956, numbered D1 and carrying the name 'WESLEY B McCANN'. It was essentially identical to the first order of VR T classes, with the only noticeable changes being the pilot, logo on the paint and the addition of dynamic brakes.

At least one of each 'type' of steam locomotive from the cement works is still preserved with the Bellarine Railway, while D1 is currently operating with 707 Operations. No.1 was scrapped, but its boiler is still in use by G42 at Puffing Billy. No.2 is stored at the Bellarine Railway alongside 2, 4, 5, 6, 11 and G33.

The most interesting of all of these locomotives (in my opinion) is G33. Boasting an impressive 4-8-2 + 2-8-4 wheel arrangement, the Australian Standard Garratts were originally designed in 1942 by the Commonwealth Land Transport Board in 1942, for use during the wartime on 3'6" gauge railways. A total of 57 of the ASG locomotives were built in various workshops all across Australia. The first few locomotives in the class were built and operational within only 12 months of the start of the designing process, which was useful for the urgent wartime needs but it was soon apparent that the class would not survive for very long as they had quite a large amount of issues due to the rushed construction process. They proved to be very unpopular with crews, and even were the subject of a strike in Western Australia! The final few ASGs were constructed in 1945.

While most of these locomotives were destined to be scrapped less than 10 years after the war ended, a small amount of them were still operational on the Emu Bay Railway until 1966. After the EBR scrapped their ASGs, the sole survivor was G33 on the Fyansford Cement Works. G33 was built at the Newport Workshops in 1945, intended for use on either the WAGR or EBR. Neither state wanted the locomotive, however the cement works expressed interest in purchasing the locomotive if some modifications were made to it (particularly the brakes, which were converted from vacuum to air. Other modifications included modified bufferbeams and drawgear). The locomotive was delivered to the cement works in late 1945.

G33 operated at Fyansford until 1968, in which its last steaming was a special trip hauling fans of the railway. During the same year, it was moved in 3 pieces by truck to the Newport Railway Museum. After a long life of sitting stationary in the museum, it was finally moved to the Bellarine Railway in 2011 for restoration. Since then, extensive restoration work has been done to the locomotive and it is expected to be returned to steam in 4-6 years. A detailed account of all work done to the locomotive so far can be found on their website. Steam locomotive restoration is an expensive thing, and donations are what keep the project moving along steadily so I urge you to donate if you can, even if it is as little as \$2! Every cent helps!



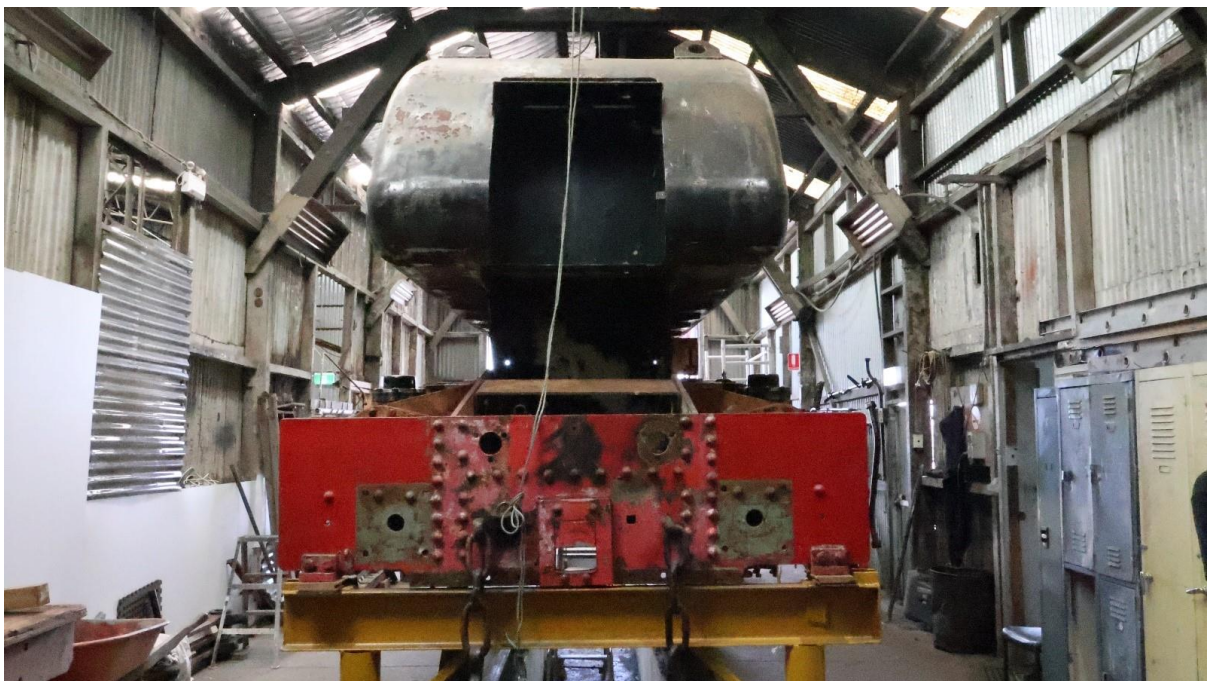


Some views of the body parts of Loco G33 under restoration at the Bellarine Railway.





Some views of Loco G33 under restoration at the Bellarine Railway Workshops.



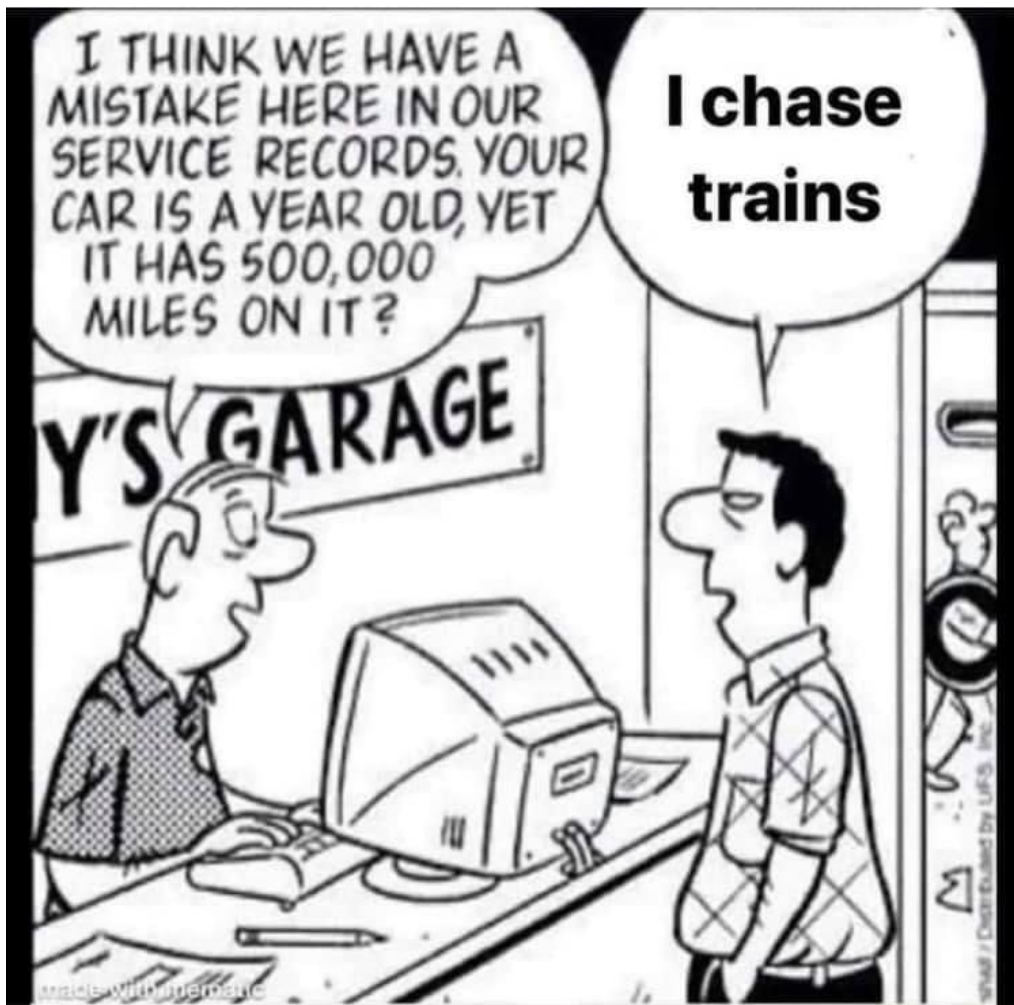


A view of the underframe of Loco G33 at the Bellarine Railway. (All Pics: Ollie Wilkes)

Information Sources:

- April 1993 Issue of “Light Railways” – The Fyansford Cement Line by John McNeill
- December, 2011 Issue of “Light Railways” – Fyansford Cement Works Railway, recalled in photographs by Richard Horne.
- <http://www.australiansteam.com/ASG.htm>
- <https://bellarinerailway.com.au/australian-standard-garratt/>
- <https://www.facebook.com/p/G-33-Fundraising-and-Progress-100069097418890/>
-

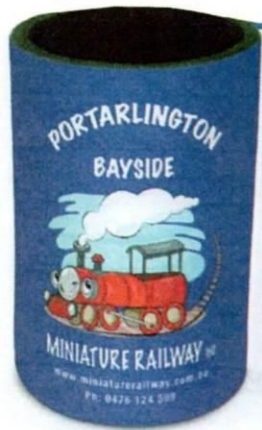




Pre internet chat room using
An old version of windows...



SOME OF OUR SOUVENIR RANGE :

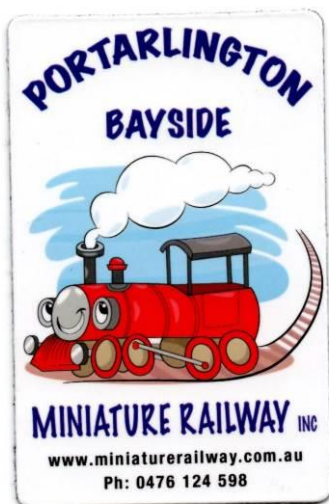


CAN COOLERS \$7.00 ea.



ENGINE DRIVER CAPS

\$20.00 ea.



FRIDGE MAGNETS \$3.00 ea.



KEY RINGS \$4.00 ea.

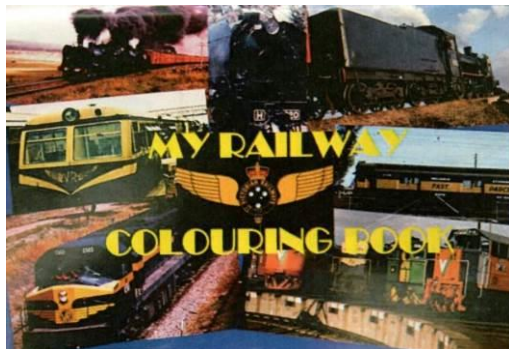


POSTCARDS \$ 1.00 ea.



**WOODEN TOY TRAINS,
TRUCKS, PLANES & OTHER
LOVELY THINGS**

PRICES ON APPLICATION.



**MY RAILWAY COLOURING
BOOK - \$8.00 ea .**

JUST SOME OF OUR

SOUVENIRS.

IF YOU CANNOT SEE IT -

JUST ASK.....

SOME OF THE ITEMS AVAILABLE AT OUR STATION KIOSK

Protect yourself and your family

Wash your hands regularly



1

Wet your hands.

Put soap on
your hands.

2



3

Rub the soap over all
parts of your hands for
at least 20 seconds.



4

Rinse your
hands under
running water.



5

Dry your hands thoroughly
with disposable paper towel
or hand dryer.



Stay germ free and healthy

CAMERA CORNER:



Looking towards the Point Richards Station on a sunny Sunday, 14th January, 2024, with an express train running along No.3 Road. The PBMR is always on the lookout for new members and volunteers. Can you help ?? See Page 24 for details of how you can.

(Picture: Lyndon Coon)

SAFETY BULLETIN BOARD

Living with the Sun



SLIP
ON A SHIRT
SLOP
ON A SUNSCREEN
SLAP
ON A HAT



These safety messages appeared in a Victorian Railways publication during the 1960's.

OUR MONTHLY PASSENGER TALLIES – From January, 2019 – to current :

Month	2020	2021	2022	2023	2024	Month	2020	2021	2022	2023
January	2214	2708	1890	2599	2498	July	-	373	604	809
February	698	1044	-	427		August	-	372	502	396
March	897	1257	1324	606		September	-	224	866	917
April	-	1718	2315	1975		October	-	1610	497	1253
May	-	990	1017	212		November	-	939	688	786
June	-	630	476	829		December	1290	1601	803	1281
<u>TOTALS</u>	<u>10551</u>	<u>9637</u>	<u>12141</u>	<u>10608</u>			<u>5099</u>	<u>13466</u>	<u>10982</u>	<u>12090</u>
	FY	FY	FY	FY	FY		YR	YR	YR	YR

Railway carried **2498 Passengers** during January, a loss of **101 Passengers** or **- 3.80 %**

Results for the current 2023 – 24 Fiscal Year are **5868 Passengers** or a loss of **736 Or - 11.22 %**

Figures represent a loss **in traffic** for the 2024 year of **101 Passengers** or **- 3.80 %**.

Passenger train operations were suspended from 22nd March, 2020 to 6th December, 2020, from 18th July, to 31st July, from 21st August, 2021 to 10th September, 2021 & from 22nd – 27th September, 2021 due to the Covid-19 Pandemic crisis. Closure from 29th January – 5th March, 2022 due to urgent track-works etc.



SPECIAL TRAIN / PARTY BOOKINGS NOTICE BOARD :

Special Train / Party Bookings have been received, as under:

<u>DAY & DATE</u>	<u>TYPE :</u>	<u>TIMES OF HIRE :</u>	<u>No. of Trains :</u>	<u>No in group</u>

FEBRUARY BIRTHDAY WISHES :

The following members have birthdays which fall during the month of **February** and the railway would like to record our congratulations and sincere best wishes on their happy occasion. We hope that they will have a great day and that all their birthday wishes will come true !!.

“Sam”	“Bendigo Bank”	“Harvey”
--------------	-----------------------	-----------------

TRAIN RUNNING ROSTERS : (Harm Jager – Roster Clerk.)

The **February Train Running Roster** has been issued. Members are asked to note the dates which they have been rostered and to ensure that they attend on their rostered day of duty. If you cannot attend kindly find a replacement. The draft March Roster is to be circulated to the members, for comment soon. **For Roster Enquiries**, contact **Harm Jager, Roster Clerk** on **Mobile Tel No. 0481-117-981. Email: harmjager78@gmail.com.au**

REMEMBER : IF YOU CANNOT ATTEND - CONTACT HARM JAGER ASAP....



PBMR Bumper Stickers (as pictured above) available at our Station Kiosk – Only \$2.00 each.....A great little gift idea for that someone special....

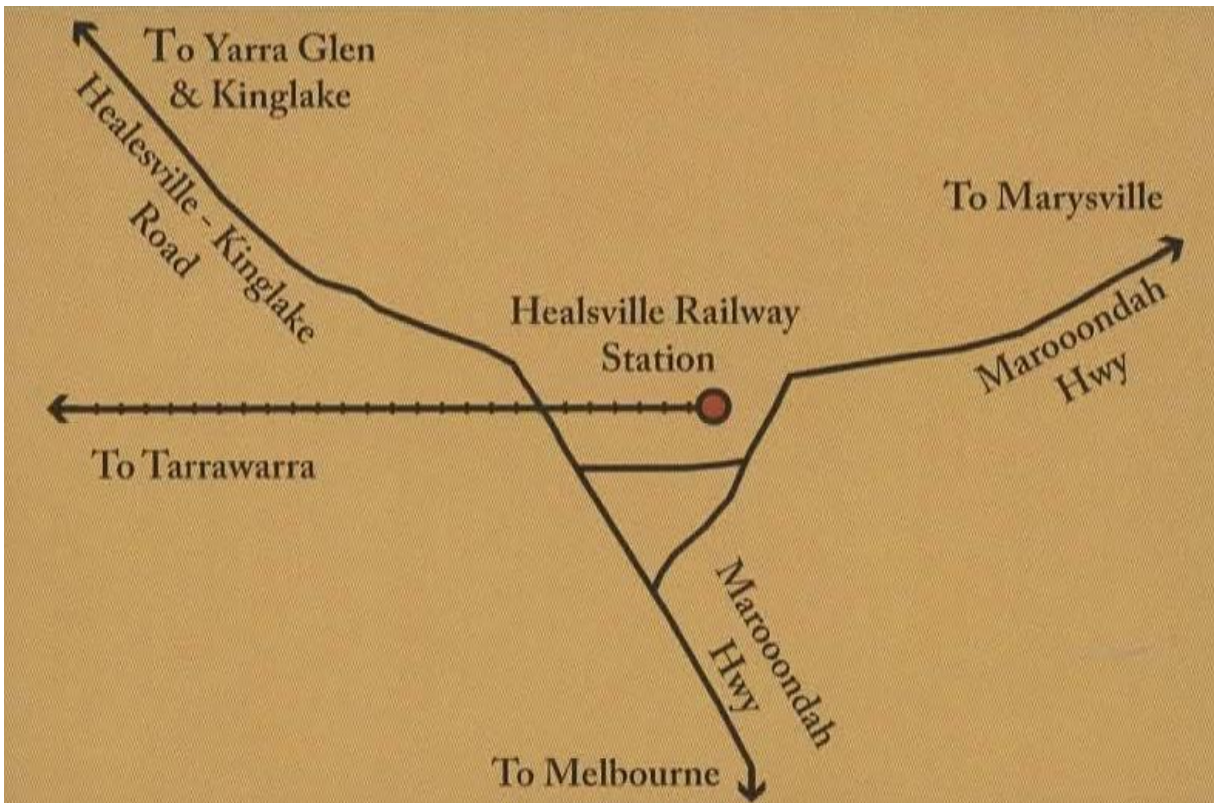
Railway Information No. 34.

Bird damage

Written by Andrew Blair, a volunteer at the Yarra Valley Railway.

From time to time the railway endures vandalism but one of the most destructive we have had, has been by birds, cockatoos tearing the tops off a picket fences at Healesville station.

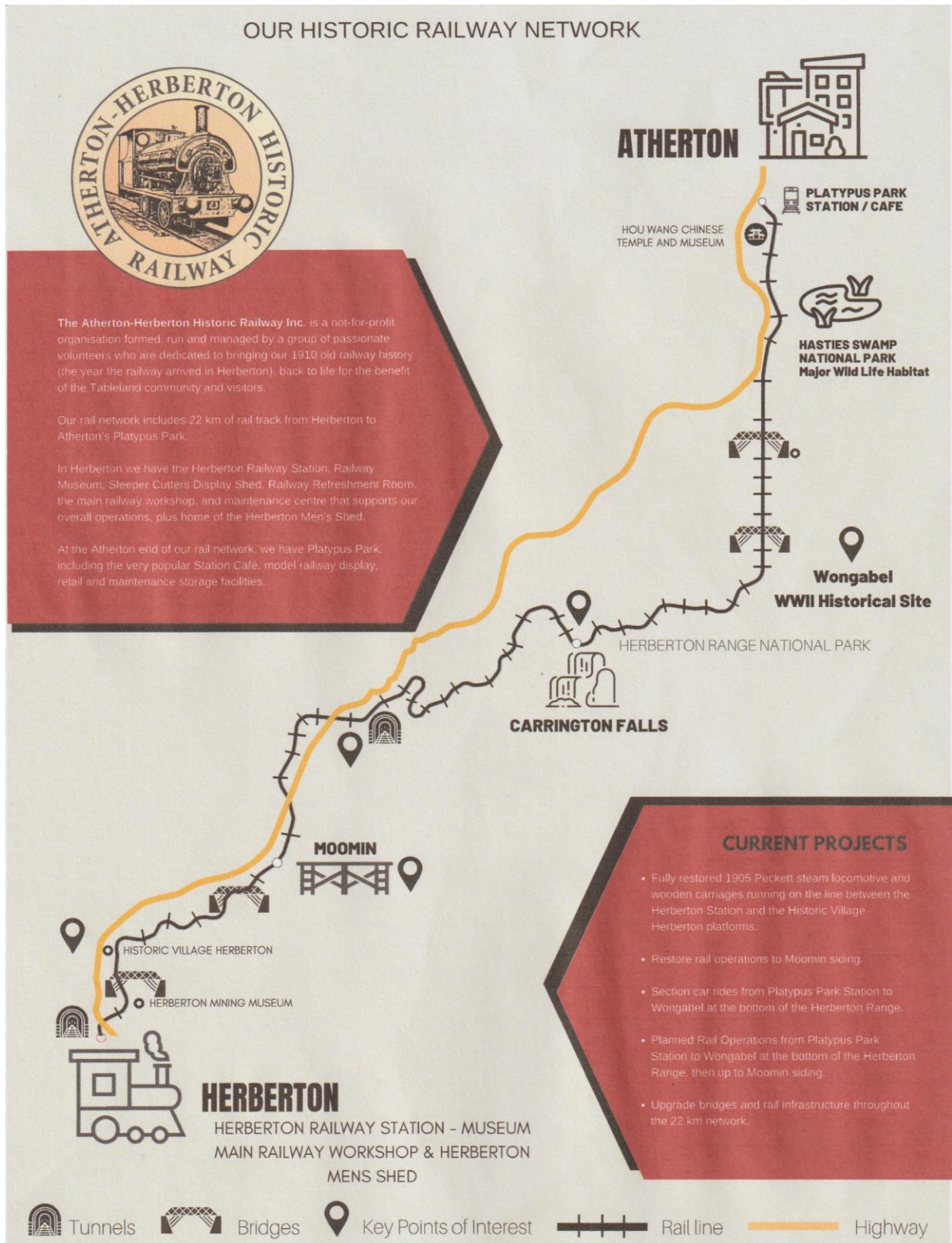






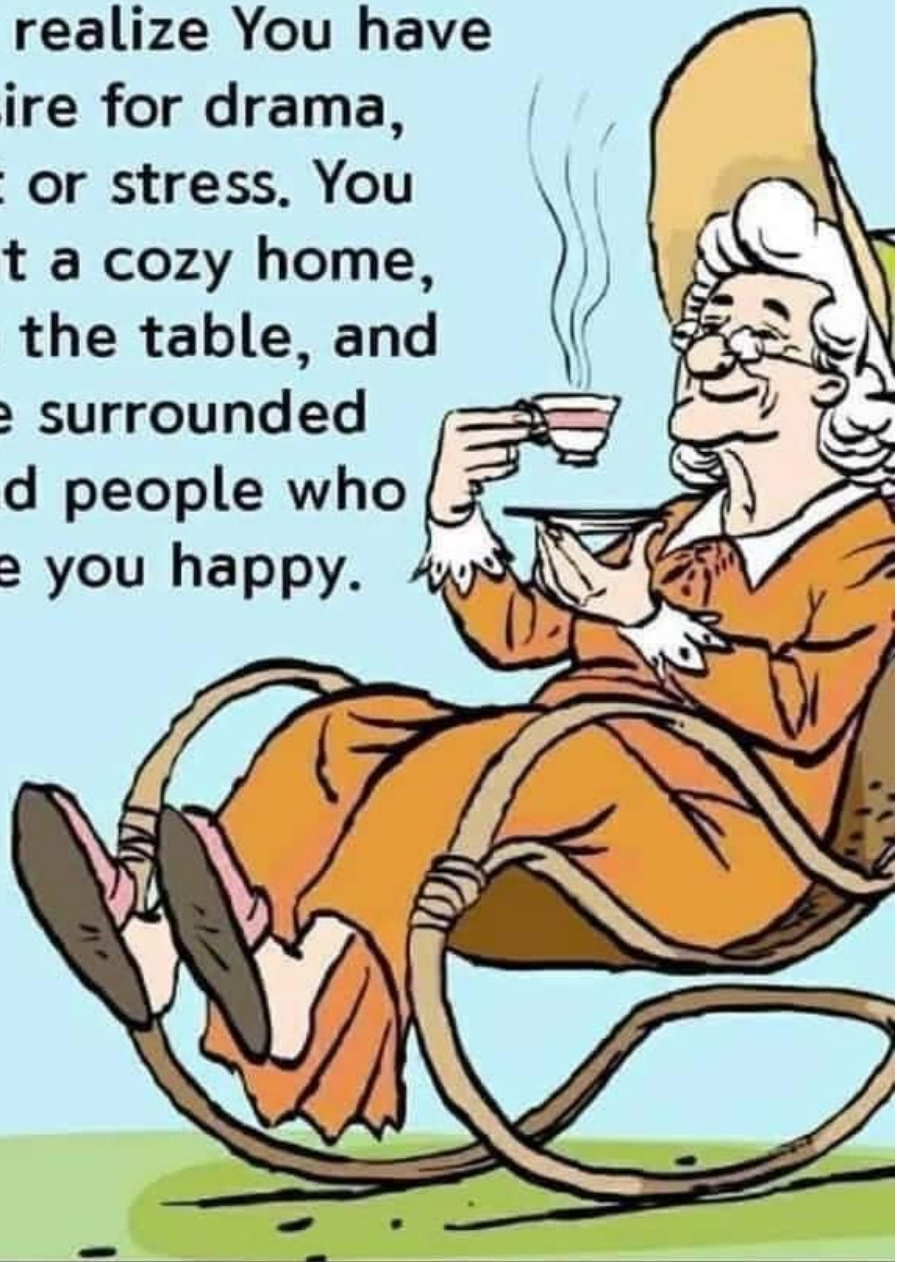
In March 2021 a group of volunteers from the ARUP company repaired the damaged fence, removing the vandalised pickets and replacing them with new pickets, and then repainting the entire fence - all in a day!





THOUGHT FOR THE MONTH :

The older you get the more you realize You have no desire for drama, conflict or stress. You just want a cozy home, food on the table, and to be surrounded by kind people who make you happy.





WANTED TO SELL :

CURTIS CONTROLLERS (24V 110 Amp)

- Available for Immediate Sale. \$265.00 ea.

CONTACT: Harm on MOBILE No. 0476-124-598.



Ornithologist? - Incorrect
Zoologist? - No
Entomologist? - Much closer -
but wrong
Arachrologist? - Wrong again.
Mothologist? - Hmm, looks
good - better
check the
Dictionary -
No such word
- still wrong!

It's the Editor looking hopefully in the Mail Bag
for Articles or Topical Notes - How About It ???

(SLSV - BWN)

Thank you to the Office of Steve McGhie, Member for Melton for support and printing.

PBMR – CALENDAR OF EVENTS :

<u>DAY & DATE:</u>	<u>EVENT & TIMES:</u>
Sunday, 4 th February, 2024	Ordinary Running Day 11.00 am to 4.00 pm
Saturday, 10 th February, 2024	COMMITTEE MEETING
Sunday, 11 th February, 2024	RAILWAY CLOSED
Sunday, 18 th February, 2024	Ordinary Running Day 11.00 am to 4.00 pm
Sunday, 25 th February, 2024	RAILWAY CLOSED
Sunday, 3 rd March, 2024	Ordinary Running Day 11.00 am to 4.00 pm
Saturday, 9 th March, 2024	COMMITTEE MEETING
Sunday, 10 th March, 2024	RAILWAY CLOSED
Sunday, 17 th March, 2024	Ordinary Running Day 11.00 am to 4.00 pm
Sunday 24 th March, 2024	RAILWAY CLOSED
Saturday, 30 th March, 2024	Easter Saturday Run 11.00 am to 4.00 pm
Sunday, 31 st March, 2024	Easter Sunday Run 11.00 am to 4.00 pm
Wednesday, 3 rd April, 2024	School Holiday Run 11.00 am to 4.00 pm
Sunday, 7 th April, 2024	Ordinary Running Day 11.00 am to 3.00 pm
Wednesday, 10 th April, 2024	School Holiday Run 11.00 am to 3.00 pm
Saturday, 13 th April, 2024	COMMITTEE MEETING
Sunday, 14 th April, 2024	RAILWAY CLOSED
Sunday, 21 st April, 2024	Ordinary Running Day 11.00 am to 3.00 pm
Sunday, 28 th April, 2024	RAILWAY CLOSED

THINGS TO NOTE:

- Summer Timetable began on Sunday, 1st October, 2023.
- Running 1st & 3rd Sundays of the month – 11.00 am to 4.00 pm
- Running every Sunday & Wednesday during January, 2024.
- Party Bookings: See “Special Trains Notice Board” – Page 15.
- Volunteers are always required – Contact Harm Jager.

OUR SPONSORS – PLEASE SUPPORT THEM...

WANT TO FILL THIS SPACE ??.

CONTACT THE PBMR

(For details - See Page 26.)

PROUDLY SPONSORED BY

buxton

5251 2388

1/6 High Street, Drysdale

Libby Coker MP
FEDERAL MEMBER FOR CORANGAMITE



LIBBY.
BETTER TOGETHER

Phone 03 5261 7683 Email Libby.Coker.MP@aph.gov.au
Address 26/500-540 Torquay Road, Armstrong Creek, VIC 3217

PROUDLY SPONSORED BY



130 Hood Street, Portarlington. Ph: 5259 2492

PROUDLY SPONSORED BY



Australia's Premier Rail Restaurant
www.theqtrain.com.au | (03) 4238 3930

PROUDLY SPONSORED BY



97 High Street, Drysdale. Ph: 5251 2603

PROUDLY SPONSORED BY



23 Weymouth St, Hamlyn Heights. Ph: 0466 041 803

Alison Marchant.

Member for Bellarine

**Supporting Our
Local Community**

- 📍 Shop G066, Gateway Plaza, 641-659 Bellarine Highway Leopold VIC 3224
- ☎ 03 5250 1987
- ✉ alison.marchant@parliament.vic.gov.au
- 🌐 alisonmarchantmp.com.au

connect with me



THE TAIL DISC :



LOOKING FOR A NEW HOBBY - WE NEED YOU !!
NEW MEMBERS ARE ALWAYS WELCOME.
VACANCIES EXIST FOR STATION STAFF, SIGNALLERS,
DRIVERS, HANDYPERSONS, KIOSK STAFF ETC ETC...
APPLY AT OUR STATION...

EMAIL:	secretary@miniaturerailway.com.au	FACEBOOK	miniaturerailway
WEBSITE:	www.miniaturerailway.com.au	PHONE:	0476-124-598
POSTAL:	P. O. Box 419, Portarlington. 3223. Vic		Port Bay Exp Feb 2024