

# PORT BAY EXPRESS

Official Newsletter of the Portarlington Bayside Miniature Railway Inc.

Volume No.9 – Issue No.12.

December, 2024.



The picture above shows Gordon & Passenger train arriving at Point Richards on a cloudy Sunday and being driven by Michael Tong, a few years back. Gordon has been out of action for a while now and it will be good to see it back in service once again.

(Pic: Brtian Coleman)

## OUR PRESIDENT REPORTS :

- It still remains quite obvious that we still need more volunteers. All members are strongly encouraged to try and recruit a new member into our ranks to ease the burden on all of us..... **Please seriously consider !!.**
- **The month of November** turned out to be a good month for the mini railway, with operating only on the 1<sup>st</sup> and 3<sup>rd</sup> Sunday (3<sup>rd</sup> & 17th) & Party Booking (20<sup>th</sup>) resulted in a tally of **690 Passengers** being carried, duly noted and recorded which is a loss of just **96 Passengers or – 12.21 %** when compared to November, last year.
- **We need your valued help...**A few working bees are planned in the future and your support is always required. There are a few outstanding jobs “on the books” and the help of all members is earnestly requested. Notices of Working Bees will be sent out, **so please consider when that happens !!.**
- **Please take care** when you are filling out Drivers Pre-Running Check Sheets and make sure they are completed with all relevant parts correctly filled in.

Keith Stasinowsky – President.



## FROM THE SECRETARY'S DESK:

- **There are vacancies** for Party Bookings. The miniature railway makes for that ideal facility for your family. Contact our Party Bookings Person, Harm, on 0476-124-598.
- **It is a legal requirement** for all members to notify the Department of Government Services (formerly Department of Justice and Community Safety) of their personal involvement with this miniature railway. This can be done “On line” via their website: [workingwithchildren.vic.gov.au](http://workingwithchildren.vic.gov.au)
- **It is vitally important** when you arrive and depart from the miniature railway **to sign on and off in the Attendance Book** in the Station Office. If you fail to do this you are not covered by our Insurance scheme. **Kindly ensure that you do this, please....**
- **Whenever a reportable incident occurs** it the responsibility of the member(s) concerned to **submit an Incident Report** to the Trackmaster on duty. These reports are to be passed onto the Secretary ASAP, for further processing as the case maybe.

Brian Coleman – Secretary.



**The Don River Railway has released its much anticipated tickets for its 50th Year Celebrations as from Thursday, October 10<sup>th</sup>, 2024.**

Don River Railway is hosting a 3 day event between February 14<sup>th</sup> & 16<sup>th</sup> to celebrate its 50<sup>th</sup> Year. The event will focus on showcasing as much of Tasmania's Railway History and transport history both past & present.

The Railway hopes to attract 5000+ visitors over the three-day event from Tasmania and Interstate visitors. Ticket options & more information will go live via our website from **Thursday October 10<sup>th</sup>, 2024.** [www.donriverrailway.com.au](http://www.donriverrailway.com.au)

Event Manager Matt Goss said “We have been planning this event over the last few years. The original event dates having to be postponed due to last year's major fire. Like a phoenix rising from the ashes, we have used the extra time to build on the already grand plans to make it even better.

The event promises to be one of the railways largest in history and will feature the biggest collaboration of Visiting Railway Locomotives in Tasmanian History. Something we are very proud to have achieved The event will feature four Marquee visiting Steam Engines & a visit from two Diesel Locomotives.

Steam Locomotive ABT 3 from the West Coast Wilderness Railway and Steam Locomotive C22 from the Tasmanian Transport Museum will supplement Don River’s own locomotive fleet, all of which will haul passenger trains across the event. Wee Georgie Wood from the Wee Georgie Wood Steam Railway and the Krauss locomotive from Sheffield Steam and Heritage Centre will also create live steam narrow gauge working display in our yard. Tasmania’s’ mainline operator, TASRail, will also showcase two members of its own locomotive fleet at Coles Beach on Saturday and Sunday, the locomotives will be accessible for public viewing during the event.

Some of the many other attractions at the event will be, working traction engines with a pre event road run, a model railway train show, royal carriage display, miniature steam displays, vintage cars, bus and truck displays, workshop self-guided tours, trolley runs, vintage photo stops, turntable displays, crusher display, roving entertainers, food & drinks stalls, entertainment, farm animals and much more.

The Don River Railway will run trains departing at least twice an hour featuring a collection of all its available rolling stock across the weekend.

Eamonn Seddon, General Manager at Don River Railway commented “We hope to see both rail and heritage enthusiasts from afar make the journey here for this grand event as well as anyone who has visited or helped the railway out over the years. The event will be about having a little fun and celebrating all that has been achieved in heritage railways over the last fifty years.

We also welcome the partnership between a broad range of Tasmania’s Railway and heritage operators, between us showcasing the role that railways play in Tasmania’s Tourism and Transport Sector.”



## Yarra Valley Railway Information No. 43

### Steam Locomotive J 516



**What is covered by this tarpaulin? The answer is: A steam locomotive awaiting restoration. Unfortunately we do not have shed space to store it under cover. The funnel has been removed prior to it being covered.**



## Port Bay Express

December, 2024.



The locomotive is J 516. It was in a Poulter Reserve, a children's playground in Greensborough, badly graffitied. In 1990 before it was transported by road to Yering, it was repainted. The tender was carried on a separate truck.

At Yering it was transferred from the road truck to the rails, and then was hauled by a diesel locomotive W 250 to Healesville. This was before any of the wooden trestle

bridges were declared unsafe and prior to the 2009 fires which destroyed 8 of the wooden bridges between Lilydale and Healesville.



Once in Healesville many of the parts were removed from the locomotive. Seen here, the boiler cladding and insulation, the cabin, the locomotive numbers, the wheel connecting rods, the lights, and many other items have been removed and placed in storage.



The locomotive tender and cabin have been set aside at Healesville. With so many other projects demanding the railway volunteers time, the huge task of returning this locomotive to operating condition appears to be a long way off.



---

**Written by the late Andrew Blair, a past member of the Yarra Valley Railway.**

**'We Need You.'**

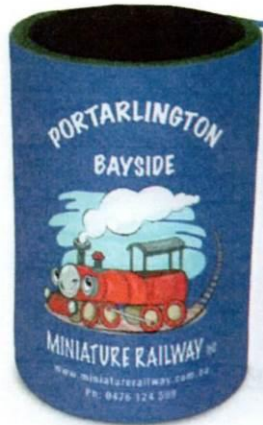




**WISHING ALL OUR**  
**VOLUNTEERS AND LOYAL**  
**SUPPORTERS A VERY MERRY**  
**XMAS AND HAPPY NEW YEAR**  
**FOR 2025 – AS WELL.....**



**SOME OF OUR SOUVENIR RANGE :**

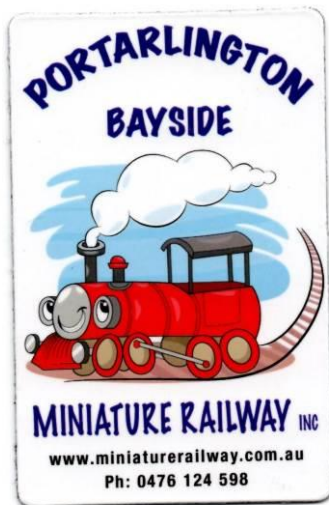


**CAN COOLERS \$7.00 ea.**

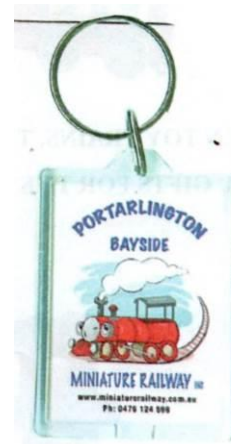


**ENGINE DRIVER CAPS**

**\$20.00 ea.**



**FRIDGE MAGNETS \$3.00 ea.**



**KEY RINGS \$4.00 ea.**

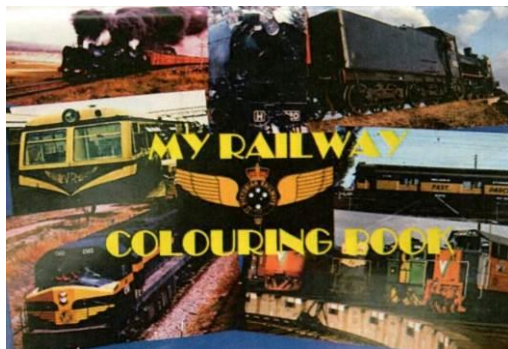


**POSTCARDS \$ 1.00 ea.**



**WOODEN TOY TRAINS,  
TRUCKS, PLANES & OTHER  
LOVELY THINGS**

**PRICES ON APPLICATION.**



**MY RAILWAY COLOURING  
BOOK - \$8.00 ea .**

**JUST SOME OF OUR**

**SOUVENIRS.**

**IF YOU CANNOT SEE IT –**

**JUST ASK.....**

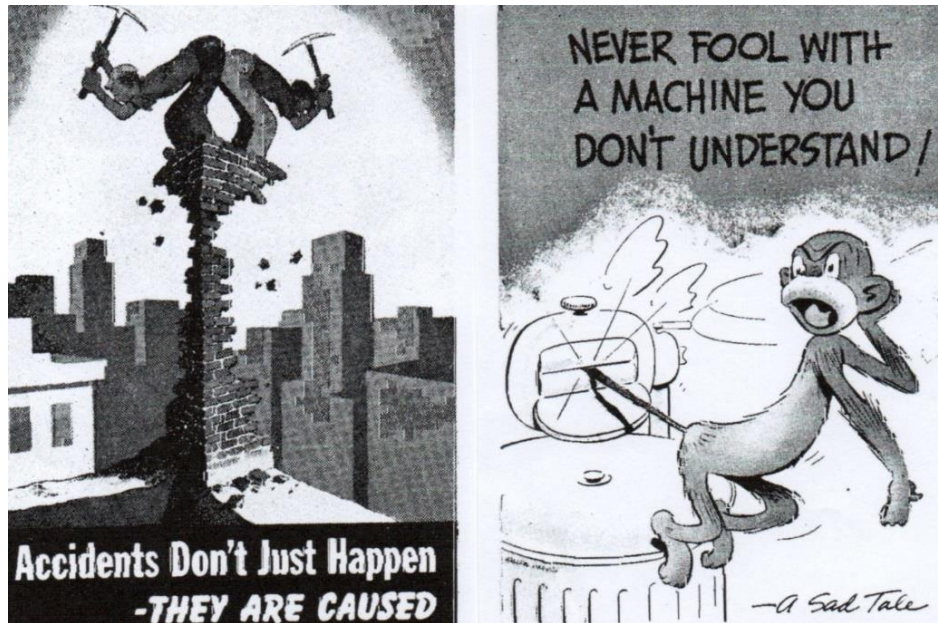
**SOME OF THE ITEMS AVAILABLE AT OUR STATION KIOSK**

## CAMERA CORNER:



It's a wintery Sunday, 7<sup>th</sup> July, 2021 and Rochelle Holstein, one of our loyal volunteers can be seen awaiting customers in our well stocked Point Richards Station Kiosk. Her valued efforts are appreciated very much by this association. We need more volunteers – Can you consider helping us ?? See Page 24 for details... (Picture: Brian Coleman)

## SAFETY BULLETIN BOARD



These safety messages appeared in a Victorian Railways publication during the 1960's.

### OUR MONTHLY PASSENGER TALLIES – From January, 2021 – to current :

Month	2021	2022	2023	2024	2025	Month	2021	2022	2023	2024
January	2708	1890	2599	2498		July	373	604	809	765
February	1044	-	427	206		August	372	502	396	502
March	1257	1324	606	2355		September	224	866	917	342
April	1718	2315	1975	862		October	1610	497	1253	1250
May	990	1017	212	628		November	939	688	786	690
June	630	476	829	724		December	1601	803	1281	
	<u>9637</u>	<u>12141</u>	<u>10608</u>	<u>12715</u>			<u>13466</u>	<u>10982</u>	<u>12090</u>	
	FY	FY	FY	FY	FY		YR	YR	YR	YR

Railway carried **690** Passengers during November, a loss of **96** Passengers or - **12.21 %**

Results for the current 2024 – 25 Fiscal Year are **3549** Passengers or a loss of **612** or - **14.70 %**

Figures represent a gain in traffic for the 2024 year of **13** Passengers or + **0.12 %**.

Passenger train operations were suspended from 22<sup>nd</sup> March, 2020 to 6<sup>th</sup> December, 2020, from 18<sup>th</sup> July, to 31<sup>st</sup> July, from 21<sup>st</sup> August, 2021 to 10<sup>th</sup> September, 2021 & from 22<sup>nd</sup> – 27<sup>th</sup> September, 2021 due to the Covid-19 Pandemic crisis. Closure from 29<sup>th</sup> January – 5<sup>th</sup> March, 2022 was due to urgent track-works.

**A TRIBUTE TO EAMONN SEDDON – A TOURIST RAILWAY ICON**

It is saddening to hear the news of the sudden passing of Eamonn Seddon on Friday 18 October 2024. Eamonn was a member of the Society during his time as CEO at Puffing Billy Railway and continued this membership for some time after he returned to Tasmania.

Eamonn Seddon was the CEO of Puffing Billy Railway from November 2007 until November 2013 working in Melbourne 5 days a week and returning to his family in Tasmania at weekends. Eamonn brought many changes to Puffing Billy to address the challenges of developing the passenger experience and building the sustainability of the railway, with a focus on investment in passenger facilities and infrastructure development and replacement and building the revenue to support this. His decision to not renew his contract was so he could be closer to his family in Tasmania.

Eamonn came to Puffing Billy after working at Ffestiniog and Welsh Highland Railway in Gwynedd, Wales and West Coast Wilderness Railway in Tasmania. In his teens, he was a founding member of Llangollen Railway. He brought this wealth of experience in tourist heritage railways to Puffing Billy.

He started his career as a professional stage manager, before an opportunity came up to become Marketing Manager at Ffestiniog (where he had been a volunteer for some years). In 2000, Eamonn moved to Tasmania to manage the rebuilding of the ABT rack railway in Queenstown. This project involved reconstruction of 34km of track and 39 trestle bridges, plus stations and carriages. After reopening in 2003, the railway was renamed to West Coast Wilderness Railways and Eamonn was its first CEO, until he left to join Puffing Billy Railway.





After his time at Puffing Billy, he returned to Tasmania as Tourism Manager at Launceston Council. Later on, Eamonn took on many other challenges, including leading the Don River Railway in Devonport, developing with Linda, his wife, Prestige Tours Tasmania which focused on wine and food tours of northern Tasmania and working for Railway Adventures as a tour leader, introducing travellers to the many tourist rail opportunities in Tasmania.

Other pastimes of Eamonn's included classical cello playing and model railways. His award winning model railway layout *Totternhoe* has been displayed around Australia. He certainly kept busy throughout his life.

Eamonn is survived by his wife and friend Linda and his daughter Carys. He will be missed by many in the tourist and heritage railway sector. He was aged 64.

Sincere condolences are with Linda and Carys and family and friends.

A service to celebrate Eamonn's life was held on Friday 1 November, 2024, at Finney Funerals, Youngtown, Tasmania.

**Acknowledgement is made to Anne McLeish, Secretary of the PBPS for this information and to the PBPS Archives for pictures contained in the article.**

**SPECIAL TRAIN / PARTY BOOKINGS NOTICE BOARD :**

Special Train / Party Bookings have been received, as under:

<u>DAY &amp; DATE</u>	<u>TYPE :</u>	<u>TIMES OF HIRE :</u>	<u>No. of Trains :</u>	<u>No in group</u>
Wednesday 11 <sup>th</sup> December.	Party	1000 – 1200	2	30
Friday, 13 <sup>th</sup> December	Party	1000 - 1200	2	25
Saturday, 4 <sup>th</sup> January	Party	1130 - 1330	2	25

**DECEMBER BIRTHDAY WISHES :**

The following members have birthdays which fall during the month of **December** and the railway would like to record our congratulations and sincere best wishes on their happy occasion. We hope that they will have a great day and that all their birthday wishes will come true !!.

<b>Kerry Blues</b>	<b>Ron May</b>	<b>Phillip Dall</b>
<b>Keith Stasinowsky</b>	<b>Margaret Vella</b>	<b>Harm Jager</b>

**TRAIN RUNNING ROSTERS :** (Harm Jager – Roster Clerk.)

The **December Train Running Roster** has been issued. Members are asked to note the dates which they have been rostered and to ensure that they attend on their rostered day of duty. If you cannot attend kindly find a replacement. The draft January Roster is to be circulated to the members, for comment soon. **For Roster Enquiries**, contact **Harm Jager, Roster Clerk** on **Mobile Tel No. 0481-117-981. Email: harmjager78@gmail.com.au**

**REMEMBER : IF YOU CANNOT ATTEND - CONTACT HARM JAGER ASAP....**



**PBMR Bumper Stickers (as pictured above) available at our Station Kiosk – Only \$2.00 each.....A great little gift idea for the car of someone special....**

**THOUGHT FOR THE MONTH :**

You can lead a horse  
to water, but you  
can't make him drink



You can show a  
person the truth,  
but you can't make  
them think



Now available from the LRRSA .....



## ***Tullah and its Tramways***

**By Ross Mainwaring — Published by the LRRSA**

Hard cover, 160 pages on art paper, A4 size, 190 photographs, 14 maps and diagrams, references, and index.

For over fifty years the small mining town of Tullah, in the rugged mountains of western Tasmania, had only one connection with the outside world – a lightly built 2 ft gauge tramway worked by small four-wheel steam locomotives. The most famous of these was *Wee Georgie Wood*, which often featured as a curiosity in the mainland media.

This book not only gives a very comprehensive history of the tramway and its rolling stock, but it also gives many fascinating insights into the lives of Tullah's residents, both at work and at play.

As well as describing the Tullah tramway, the book also describes the building of the Emu Bay Railway from Guildford to Zeehan. This was another vital link providing Tullah's connection to the outside world. The methods used to get to Tullah before this railway was built were ingenious, and are described in detail.

Tullah's isolation ended in December 1961 with the opening of a road to Rosebery. *Wee Georgie Wood* continued to work on tramways around the mine at Tullah for about four more years. But this was not the end. Its operation was later taken over by volunteers, and it still operates carrying passengers within the township of Tullah.

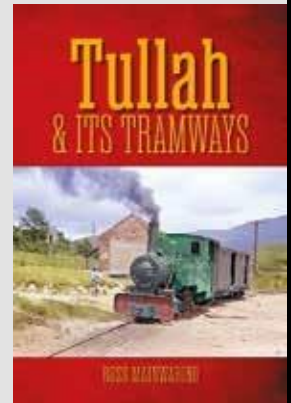
The history extends to several other tramways in the Tullah area, and is complemented by many maps and historic photographs.

**Online orders:** <https://shop.lrrsa.org.au/>

**Or by Mail:** LRRSA Sales P.O. Box 21, Surrey Hills, Vic 3127.

**Price: \$59.00** (\$44.25 for LRRSA members).

**All prices plus postage** (\$18.30 within Australia). (Postage will be cheaper if buying more than one book.)





# FLU vs The Common Cold

How do you know if you have the Flu or a Cold?



## Flu symptoms vs Cold symptoms

Fever (often high)	Chills	Headaches
Severe cough	Muscle aches/pains	Sore throat

Sore throat	Runny nose	Coughing
Sneezing	General congestion	Feeling miserable

Children's symptoms may also include nausea, vomiting and diarrhoea.

Most Australian adults contract a cold two to three times a year.

On average an adult contracts influenza just once every five years or less.

In an average year, children contract a cold six to ten (or more) times.

If in doubt make sure you visit your GP to follow up any symptoms you are unsure about, especially if they persist over a few days or if any of your symptoms get worse.



During the 1950 – 60's the Victorian Railways were actively seeking staff for many of their operating grades. It was a time of job opportunities and vacancies with lots of openings available in the Railway Service. Alas times have changed just a tad. The poster above reflects the optimism of those golden times.....

# 50<sup>th</sup> "ANNIVERSARY" OF CYCLONE TRACY

On Christmas Day, 25<sup>th</sup> December, 1974, now 50 years ago, a Killer Cyclone named Tracy smashed into Darwin and reduced a lot of that city into rubble. There was loss of life, immense damage, much distress and anxiety. A national campaign was launched to get things put right.

It was a time of serious reflection for most Australians in what was supposed to be a happy holiday time, turned into a national emergency involving many who helped get Darwin back on its feet. By the time Cyclone Tracy reached Darwin the 3'6" (1067 mm) narrow gauge railway line to Larrimah was on its proverbial last legs and did not survive long after this tragic event, officially closing on 30<sup>th</sup> June, 1976. A brand new Standard Gauge 4'8 1/2" (1435 mm) Railway was built from Alice Springs to Darwin and was officially opened during February, 2004.

It is also a time to remember and reflect on that tragic event of 50 years ago....

**DARWIN WIPED OUT** — By Tracy, the killer cyclone

**THE TOLL: DEAD, 49 HOMELESS, 30,000**

By MICHAEL GAWENDA

**AT LEAST 49 people died in the cyclone which smashed Darwin yesterday.**

Officials say the toll could reach 100 after rescuers search rubble.

Cyclone Tracy has destroyed or badly damaged 95 per cent of the city.

Officials estimate up to 30,000 of the city's 45,000 people are homeless.

**7 ships**

All power is off. There is no fresh water. Motorbills' camps are being set up.

Tracy's 240 km/h (150 mph) winds made the city a wasteland.

Thousands of shocked people watched wreckage piled around.

The Acting Prime Minister, Mr. Gorton, said last night, "This is a national disaster."

He will fly to Darwin today.

As the Federal Government aided operations, one wonder why has it not done more than send the city out a few weeks' funds with \$100 million.

**They need our help...**

**Cairns on the way**

At 5 a.m. the Dept. of Public Services, the Cairns, will be in Darwin with the 10,000 tons of the damaged stores. — Super P.M.

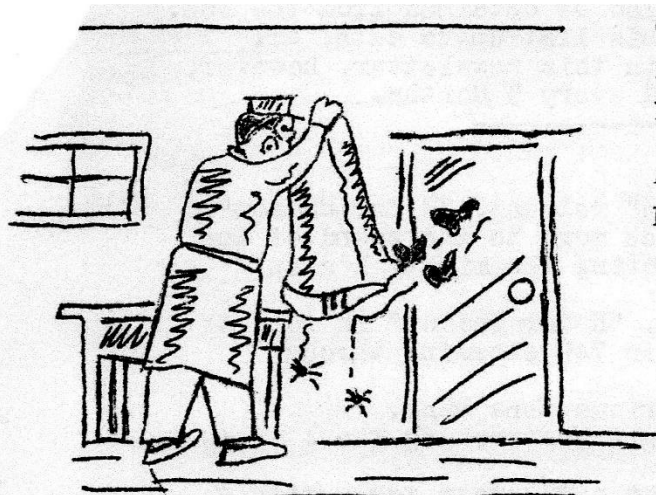


**WANTED TO SELL :**

**CURTIS CONTROLLERS (24V 110 Amp)**

**- Available for Immediate Sale. \$265.00 ea.**

**CONTACT: Harm on MOBILE No. 0476-124-598.**



- Ornithologist? - Incorrect
- Zoologist? - No
- Entomologist? - Much closer -  
but wrong
- Arachrologist? - Wrong again.
- Mothologist? - Hmm, looks  
good - better  
check the  
Dictionary -  
No such word  
- still wrong!

It's the Editor looking hopefully in the Mail Bag  
for Articles or Topical Notes - How About It ???

(SLSV - BWN)

**Thank you to the Office of Steve McGhie, Member for Melton for support and printing.**

**PBMR – CALENDAR OF EVENTS :**

<b><u>DAY &amp; DATE:</u></b>	<b><u>EVENT &amp; TIMES:</u></b>
Sunday, 1 <sup>st</sup> December, 2024 - 9 <sup>th</sup> B'day	Ordinary Running Day – 11.00 am to 4.00 pm
Sunday, 8 <sup>th</sup> December, 2024	RAILWAY CLOSED
Saturday, 14 <sup>th</sup> December, 2024	COMMITTEE MEETING
Sunday, 15 <sup>th</sup> December, 2024	Ordinary Running Day 11.00 am to 4.00 pm - Santa
Sunday, 22 <sup>nd</sup> December, 2024	RAILWAY CLOSED
Wednesday 25 <sup>th</sup> December, 2024	XMAS DAY – RAILWAY CLOSED
Thursday, 26 <sup>th</sup> December, 2024	BOXING DAY – RAILWAY CLOSED
Sunday, 29 <sup>th</sup> December, 2024	RAILWAY CLOSED
Wednesday, 1 <sup>st</sup> January, 2025	RAILWAY CLOSED
Sunday, 6 <sup>th</sup> January, 2025	Ordinary Running Day 11.00 am to 4.00 pm
Wednesday, 8 <sup>th</sup> January, 2025	School Holiday Run 11.00 am to 4.00 pm
Sunday, 12 <sup>th</sup> January, 2025.	Ordinary Running Day 11.00 am to 4.00 pm
Wednesday, 15 <sup>th</sup> January, 2025	School Holiday Runs 11.00 am to 4.00 pm
Sunday, 19 <sup>th</sup> January, 2025	Ordinary Running Day, 11.00 am to 4.00 pm
Wednesday, 22 <sup>nd</sup> January, 2025	School Holiday Run 11.00 am to 4.00 pm
Sunday, 2 <sup>nd</sup> February, 2025	Ordinary Running Day 11.00 am to 4.00 pm
Sunday, 9 <sup>th</sup> February, 2025	RAILWAY CLOSED
Sunday, 16 <sup>th</sup> February, 2025	Ordinary Running Day 11.00 am to 4.00 pm
Sunday, 23 <sup>rd</sup> February, 2025	RAILWAY CLOSED

**THINGS TO NOTE:**

- Summer Timetable began on Sunday, 6<sup>th</sup> October, 2024.
- Currently running 1<sup>st</sup> & 3<sup>rd</sup> Sundays of the month – 11.00 am to 3.00 pm
- Party Bookings: See “Special Trains Notice Board” – Page .
- Volunteers are always required – Contact details shown on Page .

**OUR SPONSORS – PLEASE SUPPORT THEM...**

**Gayle Tierney MP**  
**Labor Member for Western Victoria**



As your local member of the Allan Government, please feel free to contact me to discuss any State Government matters you may have.

📍 Ground Floor, 1 Yarra St, Geelong    🌐 GayleTierneyMP  
 📧 gayle.tierney@parliament.vic.gov.au    📞 gayletierneymp  
 ☎️ (03) 5224 2088    🌐 www.gayletierney.com.au

PROUDLY SPONSORED BY



**5251 2388**  
 1/6 High Street, Drysdale

**Libby Coker MP**  
 FEDERAL MEMBER FOR CORANGAMITE



**LIBBY.**  
 BETTER TOGETHER

Phone: 03 5250 1987    Email: Libby.Coker@parliament.vic.gov.au  
 Address: 26/300-340 Tarragon Road, Armstrong Creek VIC 3207

PROUDLY SPONSORED BY



130 Hood Street, Portarlington. Ph: 5259 2492

PROUDLY SPONSORED BY



Australia's Premier Rail Restaurant  
www.theqtrain.com.au | (03) 4238 3930

PROUDLY SPONSORED BY



97 High Street, Drysdale. Ph: 5251 2603

PROUDLY SPONSORED BY



153 Newcombe Street, Portarlington. Ph: 5259 3801

**Alison Marchant.**  
Member for Bellarine

**Supporting Our Local Community**

- 📍 Shop G06e, Gateway Plaza, 641-659 Bellarine Highway Leopold VIC 3224
- ☎️ 03 5250 1987
- 📧 alison.marchant@parliament.vic.gov.au
- 🌐 alisonmarchantmp.com.au
- 📱 connect with me



## THE TAIL DISC :



**LOOKING FOR A NEW HOBBY - WE NEED YOU !!**  
**NEW MEMBERS ARE ALWAYS WELCOME.**  
**VACANCIES EXIST FOR STATION STAFF, SIGNALLERS,**  
**DRIVERS, HANDYPERSONS, KIOSK STAFF ETC ETC...**  
**APPLY AT OUR STATION...**

<b>EMAIL:</b>	<a href="mailto:secretary@miniaturerailway.com.au">secretary@miniaturerailway.com.au</a>	<b>FACEBOOK</b>	<a href="#">miniaturerailway</a>
<b>WEBSITE:</b>	<a href="http://www.miniaturerailway.com.au">www.miniaturerailway.com.au</a>	<b>PHONE:</b>	<b>0476-124-598</b>
<b>POSTAL:</b>	<b>P. O. Box 419, Portarlington. 3223. Vic</b>		Port Bay Exp Dec 2024